

Come March ...



**WARA
Six Hour Event
11 March 2017**

**Setters
Jim Langford
John Cresp**

**With help from
John Tanner
Colette Sims**

- LEGEND**
- Contours
 - Control
 - Hash House
 - Water Drop
 - Magnetic North Line
 - Plantation
 - Patrolled Road
 - Road, Major Gravel
 - Road, Minor Gravel
 - Fenceline
 - Watercourse
 - River
 - Continuations
 - Dam or lake

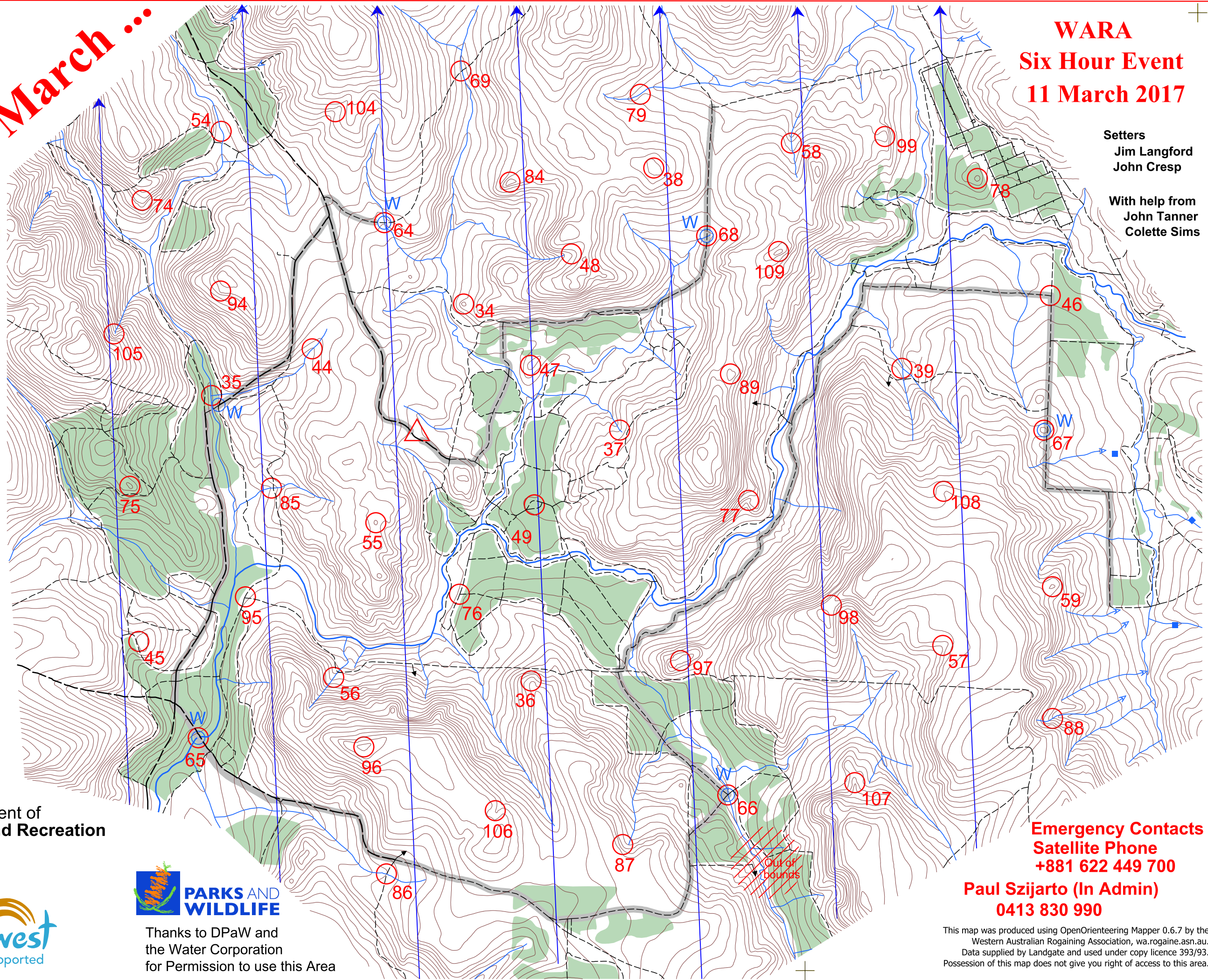
SCALE 1:25,000
5 metre contour interval
0km 0.5km 1km



Department of Sport and Recreation



Thanks to DPaW and the Water Corporation for Permission to use this Area



**Emergency Contacts
Satellite Phone
+881 622 449 700**

**Paul Szijarto (In Admin)
0413 830 990**

This map was produced using OpenOrienteering Mapper 0.6.7 by the Western Australian Rogaining Association, wa.rogaine.asn.au. Data supplied by Landgate and used under copy licence 393/93. Possession of this map does not give you right of access to this area.

Come March ... WARA Six Hour Rogaine - 11 March 2017

Control Number	Description	Points
34	The knoll	30
35	The watercourse junction	30
36	A knoll	30
37	The southern watercourse	30
38	The knoll	30
39	The watercourse junction	30

44	The watercourse	40
45	The knoll	40
46	The track junction	40
47	The knoll	40
48	The gully	40
49	The oak trees	40

54	The watercourse	50
55	The knoll	50
56	The watercourse	50
57	The gully	50
58	The watercourse	50
59	The knoll	50

64	The track-watercourse junction	60
65	The road-river junction	60
66	The track-watercourse junction	60
67	The knoll	60
68	The track-watercourse junction	60
69	The track-watercourse junction	60

Control Number	Description	Points
74	The spur	70
75	The knoll	70
76	The track junction	70
77	The gully	70
78	The knoll	70
79	A watercourse junction	70

84	The knoll	80
85	The track-watercourse junction	80
86	The track-watercourse junction	80
87	A gully, northern one	80
88	The watercourse	80
89	The knoll	80

94	A rocky outcrop	90
95	The track junction	90
96	The knoll	90
97	The knoll, the centre	90
98	The saddle	90
99	A knoll	90

104	The gully	100
105	The watercourse, upper part	100
106	The gully	100
107	The spur	100
108	The spur	100
109	The knoll	100

Important Information
<p>Registration from 12:00pm Maps and wrist tags Issued from 1:00pm</p> <p>Event Starts 3:00pm Event Finishes 6 Hrs later</p> <p>Late Penalties applied: 10 points per minute or part minute Disqualification after 30 minutes</p> <p>Sunset: 6:39pm Moonrise: 5:57pm</p> <p>Number of controls used: 48 Total Points: 3120</p> <p>What to do if you believe a tagging device at a control is not working. Have all the team try again. If still no success record the 4 digit number that is written on the control. Report the problem to Admin when you return.</p> <p>Your finish time is recorded when you tag off at one of the finish controls in front of Admin.</p>

If you need assistance or a lift back to Admin make your way to the nearest water drop or patrolled road. Patrol cars have a green flashing light.

Water drops are at or near controls 35, 64, 65, 66, 67 and 68. Water is provided only for drinking.